



NETWORK REPEATER MANUAL

Remote or Bluetooth Monitoring



Introduction

In a zone covered by the Sigfox network, there may be shadow areas (such as a basement, an underground location, etc.). It is recommended to use a repeater that will create a link between the sensors and the Feelbat cloud for data retrieval (ensure that the sensors are within 20 meters of the repeater and that the repeater is located in a zone covered by the Sigfox network to guarantee proper data transmission).

Once the repeater is configured and installed, you will be able to receive and read the data directly on your smartphone or computer and generate alerts if necessary (see the diagram below).

If you encounter any problems, please contact us at: (may appear in your spam folder)
SAV@feelbat.fr



1 sensor connected, sending 1 message per day.



5 connected sensors, each sending 2 messages per day.



Multiple sensors connected to the repeater, receiving a total of 140 messages per day.

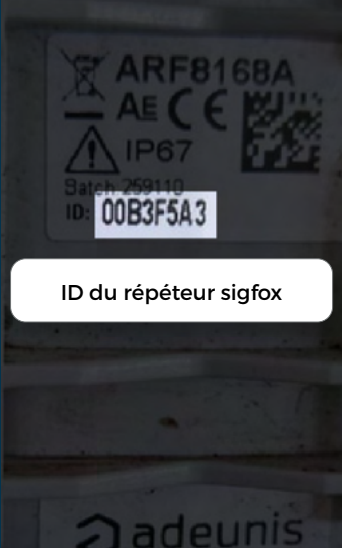
Attention:
The repeater can only send up to 140 messages per day maximum

Technical Specifications

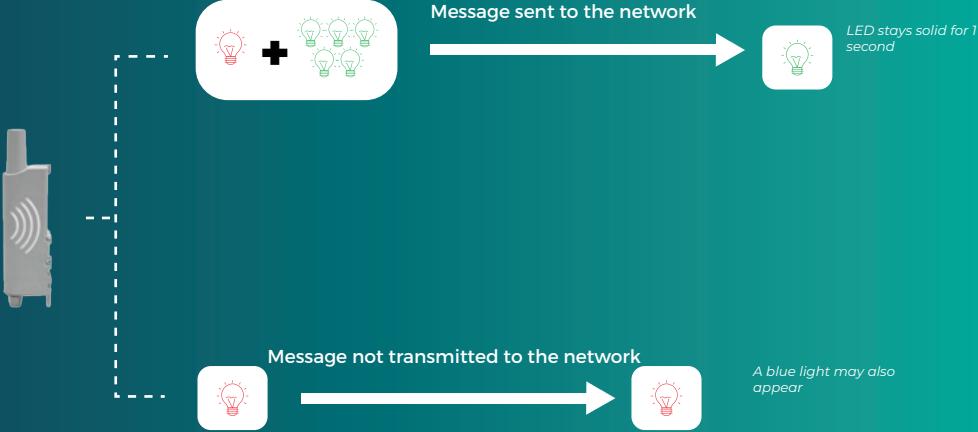
Power supply voltage: 3.6 V nominal	Bluetooth communication & LPWAN network	Standards: Directive 2014/53/EU (RED)
Dimensions: 185 x 50 x 27 mm Weight : 135 g	Range: Between 20 and 30 meters	Certification: CE
Operating conditions: -20°C to +60°C	Battery: Li-SPC12 battery pack (non-rechargeable)	Housing: IP67

Light Indicators

MODE	Red LED	Green LED
Factory default	OFF	OFF
Magnet detection	ON as soon as the magnet is detected	ON for 1 second upon magnet activation
Entering installation mode	Blinking every 500ms	Blinking every 500ms
CONFIGURATION	ON	ON
Frame detection operation	ON until detection is complete	OFF
Frame repetition operation	OFF	Blinking during repetition
Life frame transmission operation	OFF	Blinking during repetition
Duty cycle issue operation	Blinking (100ms ON / 100ms OFF) x3	OFF



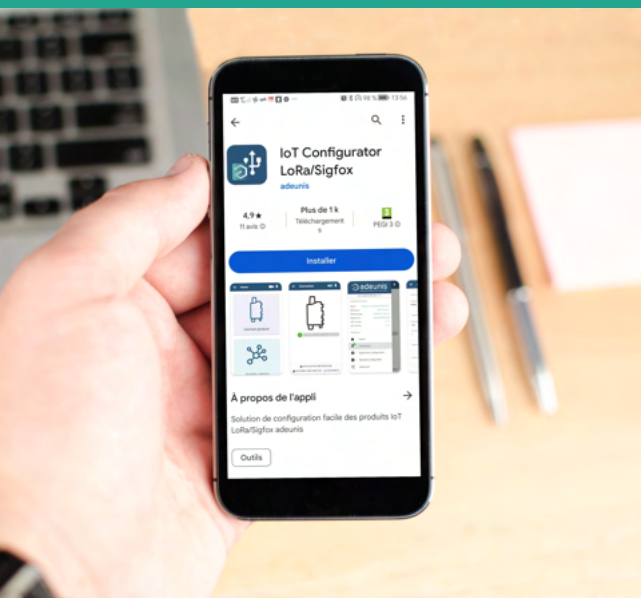
ID du répéteur sigfox



Note: The LED indicators are visible underneath the repeater and only appear when it repeats or emits.

Configuring the Repeater

Before any configuration, it is necessary to send the repeater's "ID number" by email to sav@feelbat.fr so that a Linkfeel token can be assigned to it for configuration purposes.



Download the ADEUNIS Application



The application is not available for iOS (Mac and iPhone)

Visit the following link to download the ZIP file and follow the Windows instructions to install the application:

<https://www.adeunis.com/produit/repeater-sigfox-infrastructure-reseau/>

To connect your repeater, you will need a USB to USB-B cable. (Make sure it is a USB-B cable that allows data transmission).

Connect the USB side to your computer and the USB-B side to the repeater.

(The cable is not provided with the repeater; you will also need a magnet to activate the device.)

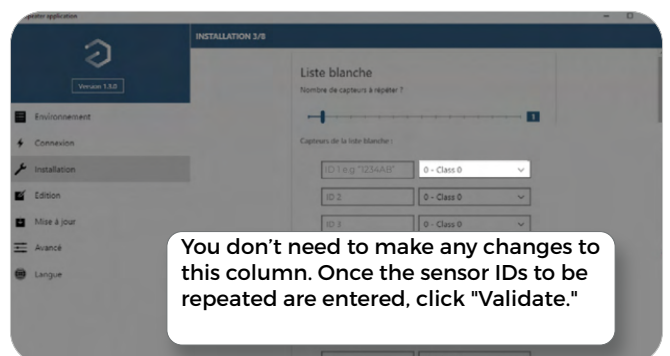
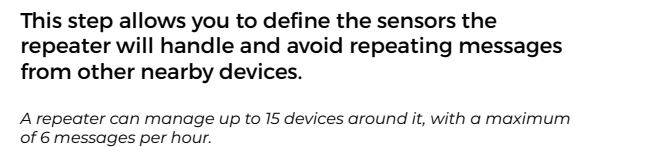
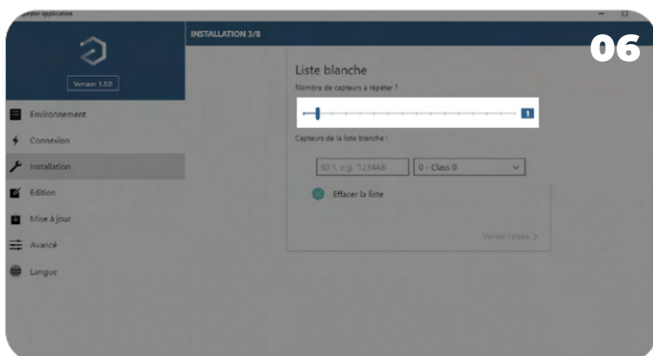
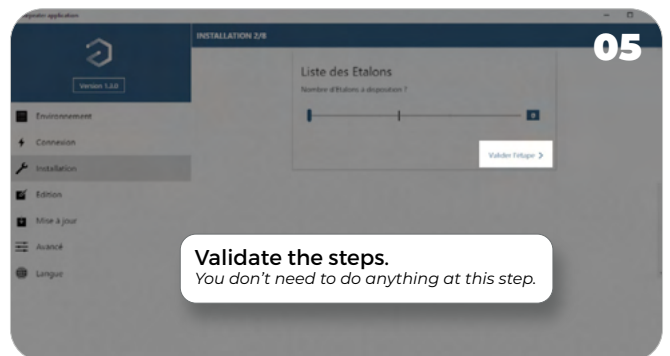
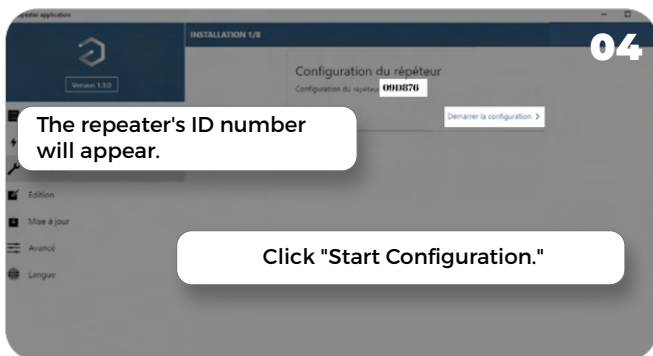
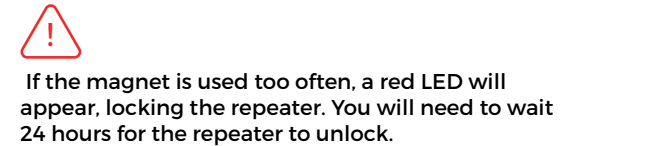
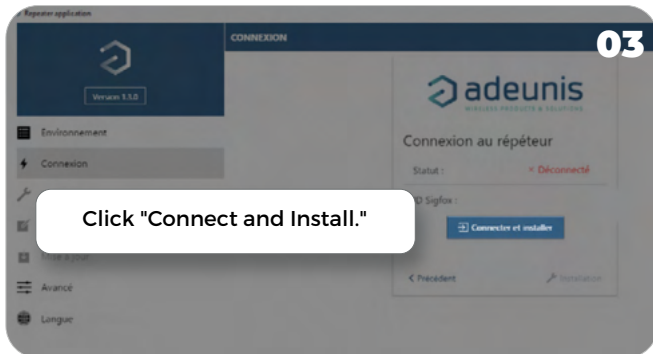
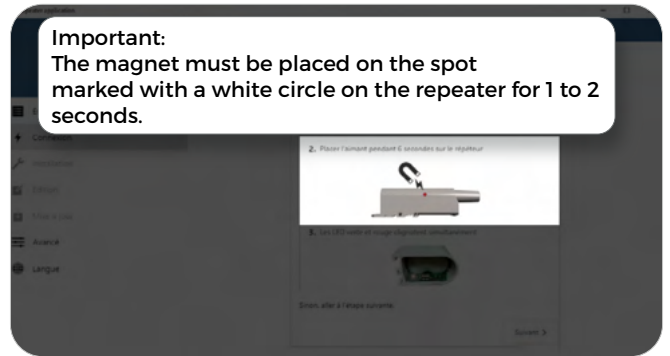


Activating the sensor with a LINKFEEL token allows the sensor to send data only if it is located within an area covered by the SIGFOX LPWAN network.

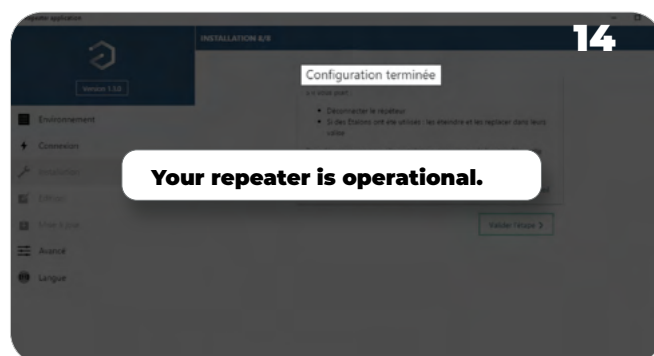
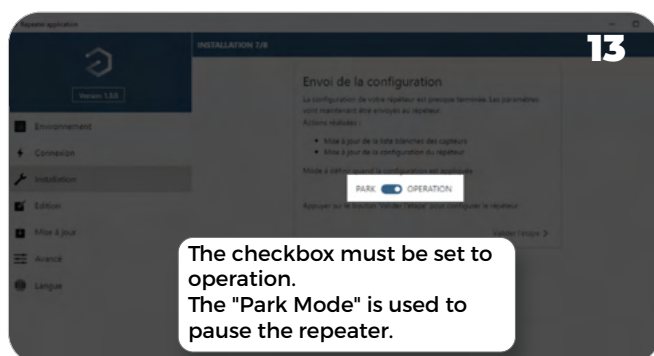
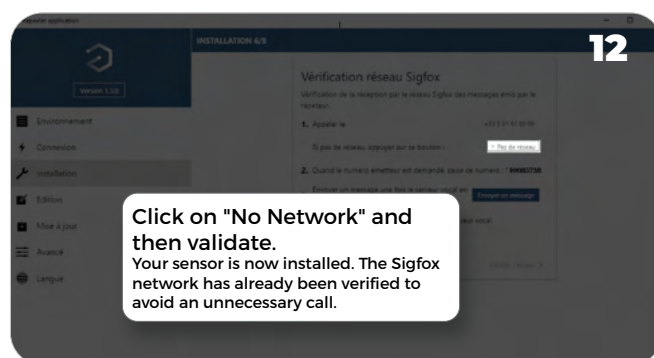
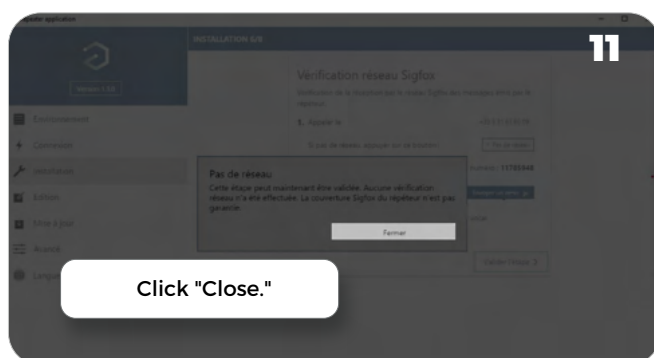
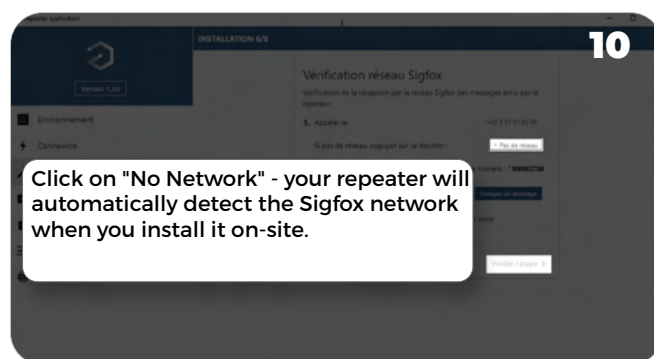
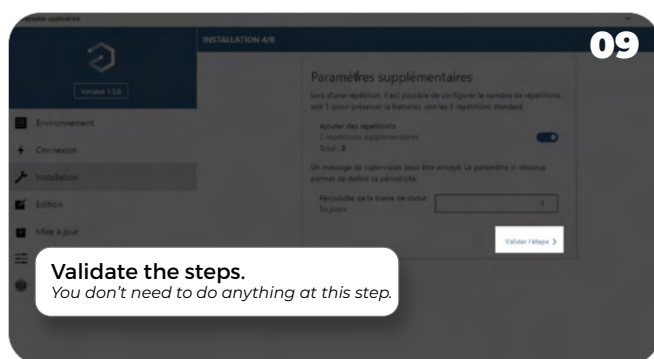
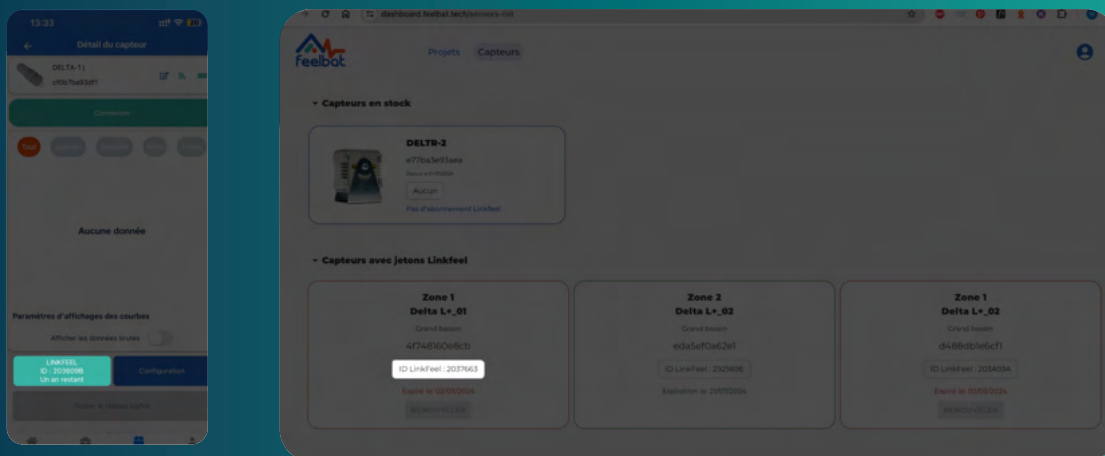
To check coverage, scan the QR code.

To ensure optimal network quality, we strongly recommend using a test unit available in our product range.





Your ID is available on the web and mobile application at the location indicated in the image.



You can now use your repeater so that your sensors transmit data to the FEELBAT cloud.

Reminder: A repeater comes with a Linkfeel token valid for 1 year.
After one year, it will be necessary to renew this token.
We recommend recording this date to ensure continuous data transmission.



Battery Life

Based on the number of sensors repeated by the device, it is recommended to plan a battery replacement following the table below:

Use Case	Number of Devices	Total Messages Repeated per Day	Battery Life (Estimated for One Repetition)
Best Use: 1 device transmitting 1 message per day	1	1	7 years
5 devices, each transmitting 2 messages per day	5	10	6 years
15 devices, each transmitting 5 messages per day	15	75	3,5 years
Maximum Usage: 140 messages per day	N/A	140	2 years

FAQ

When I connect to the repeater software and click "Connect," the message loops and I can't proceed with my installation. What should I do?

01

Verify that you sent your repeater's ID to the support team (SAV) for Linkfeel token activation (for the first year).

02

Make sure you are using a USB-to-micro-USB cable designed for data transfer.

How can I know if my repeater will work on-site?

01

It is necessary to test the Sigfox radio network using your network tester (note that network cards only provide information about the area and not the exact location where the device will be installed).

02

Once the network test is completed and the presence of a Sigfox network is confirmed, simply install your repeater on-site. It will then repeat the sensors configured during the setup process.

When I use the magnet, my repeater's light turns red and stays on. What should I do?

01

The red LED may indicate that the magnet was used for too long or multiple times. The repeater is in safe mode and will automatically unlock within 12 to 24 hours.




boutique en ligne

If you have a crack, you **FEELBAT**

Discover our video tutorials

Watch the help videos


info@feelbat.fr
04 123 800 90


4 rue Louis Breguet
JACOU 34830 FRANCE
Siège social 20 rue Maxime Riviere
97490 SAINT-MAXIME


www.feelbat.fr
in f 