

# DELTA X-L100

Large amplitude crack sensor





**The DELTA X-L100 is a connected electronic sensor designed specifically to accurately monitor large-amplitude crack movements.**

It offers a travel range of 0 to 100 mm. Equipped with a displacement sensor, it features special ball joints for easy attachment at the ends.



**Compact & Durable**  
IP65



**Precise**  
0.01 mm - 1°C



**Plug & Play**  
Easy to use and install



**Autonom**  
Battery 3,6 V - 17 Ah



**Connected**  
LPWAN or  
Bluetooth network

## Features

<b>Battery</b> 3,6 V - 17 Ah - <b>Autonomy</b> 1 to 7 years*	<b>Probe protection</b> IP65	<b>Number of movements</b> 100 million
<b>Resolution</b> 0.01 mm - 1°C	<b>Connection</b> Bluetooth & Radio LPWAN	<b>Crack size meter</b> 175 mm
<b>Accuracy</b> 5 µm - 0,5C° (+/-)	<b>Cable length</b> 2 m	<b>Fixing point</b> Ball joint on both sides
<b>Internal memory</b> for 250,000 measurements	<b>Operating temperature</b> -25° to + 70°	<b>Measurement range</b> 0 to 100 mm

*\*depending on frequency, sensor exposure and data transfer mode (Bluetooth, LPWAN, etc.).*

The DELTA X-L100 is the ideal tool for monitoring large-scale cracks, offering a reliable and autonomous solution for managing and tracking crack movements.

Integrated into the sensor and once activated, the LINKFEEL service transmits sensor data to the secure FEELBAT cloud via the LPWAN (low-power, low-bandwidth, long-range) radio network .

The patented design of the DELTA X-L100 ensures simple installation at two points, thanks to special ball joints for secure attachment.

The DELTA X housing, with its impact-resistant and weatherproof polycarbonate shell, enables temperature measurement, data storage and automatic data transmission.

The motion sensor is made of aluminium and stainless steel for greater durability.



**If you crack...**  
**you FEELBAT**

## Contact us



[contact@feelbat.fr](mailto:contact@feelbat.fr)



+33 4 123 800 90



[www.feelbat.fr](http://www.feelbat.fr)



[contact@feelbat.fr](mailto:contact@feelbat.fr)  
**04 123 800 90**



4 rue Louis Breguet  
JACOU 34830 FRANCE  
Headquarter 20 rue Maxime Riviere  
97490 SAINT-DENIS



[www.feelbat.fr](http://www.feelbat.fr)  
in f o



# Our other products



## Pack DELTA L+ extenso

The Extenso pack allows you to measure and monitor movements and displacements in structures such as tunnels, bridges, or buildings. **It enables you to assess the stability and integrity of the structure by detecting changes in convergence**, thereby helping you to take preventive measures.

**10 ML fil INVAR or 20 ML fil INVAR**



## DELTA L+

The DELTA L+ is a **connected electronic sensor that allows you to monitor a crack** with high precision and autonomy.

It allows you to monitor crack movements nearby or remotely, as well as the outside temperature, from your smartphone.

**Opening - Shearing - Angle measurement - Misalignment**



## DELTA R

The DELTA R is a connected dual-axis tilt sensor that allows you **to monitor the tilt movement of walls or structures** with high precision and autonomy.

It allows you to monitor tilt movements on both axes as well as the external temperature from your smartphone.

**Two measurement axes: Y - X**



## DELTA L+ mini

The DELTA L+ MINI provides autonomous and accurate crack monitoring, while assessing the impact of solar exposure on the cracked substrate.

It can be installed in seconds using adhesive, without drilling.

**The smallest connected crack sensor in the world!**



## DELTA X-Hs

The DELTA X-Hs is a connected sensor equipped with an electronic probe **for measuring soil moisture with high accuracy and autonomy**.

The probe, which is buried at the foot of structures, provides relevant data for effective diagnostics in the field of clay shrinkage and swelling.

**The most functional choice for the RGA**



## DELTA X-P

The X-P sensor, a piezometric sensor, allows automatic monitoring of the groundwater level.

The piezometric probe is equipped with a reinforced cable with waterproof connectors and an atmospheric correction system.

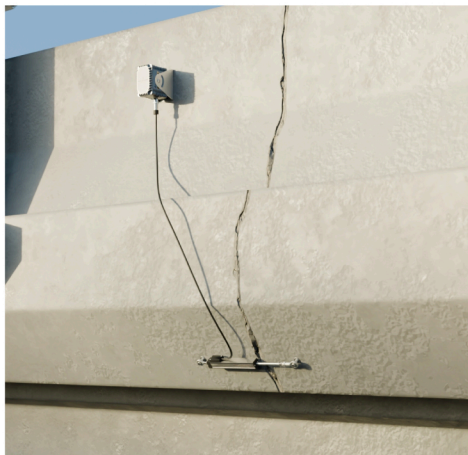
**X ml reinforced cable (several cable lengths available)**



The X-L100 sensor is a large-amplitude crack sensor designed for monitoring wide openings. It connects to the DELTA X and offers simple installation, quick configuration and accurate monitoring via the Feelbat app or the Feel Monitoring web portal.

Finally, once activated, the LINKFEEL service automatically transmits data to the secure FEELBAT cloud via the LPWAN radio network, combining low power consumption, long range and reliable communication.

## 01 Simple and easy to install



## 02 View your data in real time and remotely

Install your sensors, configure them, and monitor your structures in real time wherever you are. **Receive alerts if a predefined threshold is exceeded, for effective prevention and optimal security.**

**Edit PDF reports in just a few clicks!**

