

# DELTA L

For manual crack monitoring





The DELTA L is ideal for precise manual monitoring of cracks on three measurement axes : opening, shear and misalignment, as well as for angle measurement.

It can measure crack progression with an accuracy of 1/100 mm. Compact, durable and affordable, it is easy for anyone to use.



**Compact & Durable**



**Precise**  
1/100ème mm



**Plug & Play**  
Easy to use and install



**Digital**  
Easy to read for greater accuracy



**4 types of measurement**  
Opening, shearing, misalignment and angling

## Features

Button cell 3,6 V	Weight 0,85kg	Dimensions 22 x 4,5 x 7 cm
Accuracy 0.01 mm	Electronics - digital reading	Maximum amplitude 14 cm
Autonomy 1 to 5 years*	4 types of measurement	Fixation : all types of materials

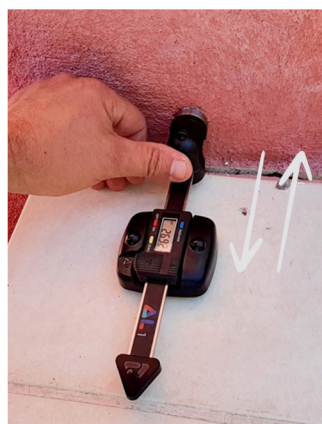
\*Depending on usage



**Opening**



**Shear**



**Angle measurement**



**Discontinuity**

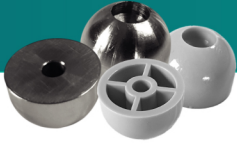
With DELTA L, monitor the condition of your structures and benefit from a comprehensive and effective solution for tracking cracks in all your structures.

Make the right decisions (immediate and medium-term work) by monitoring the progression of cracks using measuring equipment

(crack meter, gauge) renowned for their reliability and accuracy.

All you need to do is transfer the data directly to the FEELBAT mobile app to automatically generate usable graphs, enabling regular and secure monitoring in the FEELBAT cloud.

## JC1 and JC2 measuring gauges



JC1 dome gauges can be used to monitor the opening of a crack by placing them on either side. They can be easily fixed in place with a hammer-in anchor or by gluing. They are available in polycarbonate or stainless steel.



JC2 'heel' gauges are used to monitor the movement of a shear crack and misalignment (offset). They can be easily fixed with a hammer-in anchor or by gluing.

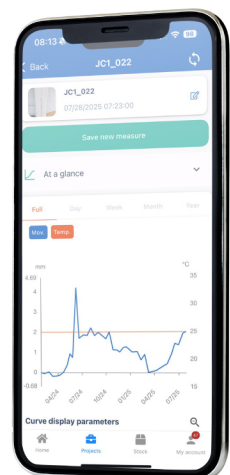
## 01 The different application cases



## 02 How to use it?

The DELTA L can be installed on a wall using the accessories provided. After installing your gauges, collect the information and transfer it directly to the mobile app to automatically generate usable graphs.

Two packs are available. For more information, visit the shop website.





# Our other products



## Pack DELTA L+ extenso

The Extenso pack allows you to measure and monitor movements and displacements in structures such as tunnels, bridges, or buildings. **It enables you to assess the stability and integrity of the structure by detecting changes in convergence**, thereby helping you to take preventive measures.

**10 ML fil INVAR or 20 ML fil INVAR**



## DELTA L+

The DELTA L+ is a **connected electronic sensor that allows you to monitor a crack** with high precision and autonomy.

It allows you to monitor crack movements nearby or remotely, as well as the outside temperature, from your smartphone.

**Opening - Shearing - Angle measurement - Misalignment**



## DELTA R

The DELTA R is a connected dual-axis tilt sensor that allows you **to monitor the tilt movement of walls or structures** with high precision and autonomy.

It allows you to monitor tilt movements on both axes as well as the external temperature from your smartphone.

**Two measurement axes: Y - X**



## DELTA L+ mini

The DELTA L+ MINI provides autonomous and accurate crack monitoring, while assessing the impact of solar exposure on the cracked substrate.

It can be installed in seconds using adhesive, without drilling.

**The smallest connected crack sensor in the world!**



## DELTA X-Hs

The DELTA X-Hs is a connected sensor equipped with an electronic probe **for measuring soil moisture with high accuracy and autonomy**.

The probe, which is buried at the foot of structures, provides relevant data for effective diagnostics in the field of clay shrinkage and swelling.

**The most functional choice for the RGA**



## DELTA X-P

The X-P sensor, a piezometric sensor, allows automatic monitoring of the groundwater level.

The piezometric probe is equipped with a reinforced cable with waterproof connectors and an atmospheric correction system.

**X ml reinforced cable (several cable lengths available)**






**If you crack...**  
**you FEELBAT**


## Contact us

 [contact@feelbat.fr](mailto:contact@feelbat.fr)

 +33 4 123 800 90

 [www.feelbat.fr](http://www.feelbat.fr)

  
[contact@feelbat.fr](mailto:contact@feelbat.fr)  
**04 123 800 90**

  
4 rue Louis Breguet  
JACOU 34830 FRANCE  
Headquarter 20 rue Maxime Riviere  
97490 SAINT-DENIS

  
[www.feelbat.fr](http://www.feelbat.fr)  
in f o