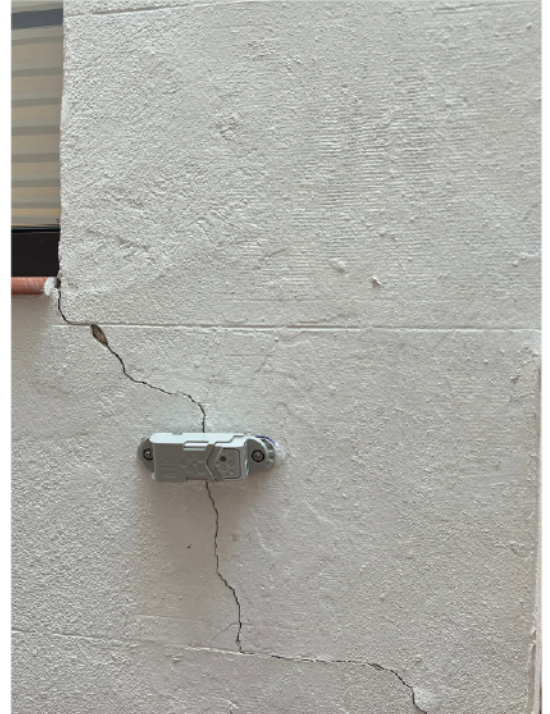


# Use Case

## Monitoring of Madrid city center – Paseo de la Castellana

As part of a structural monitoring project in a dense urban environment, the company ARPA instrumented an area located along Paseo de la Castellana, the main avenue that crosses Madrid from north to south.

**The objective is to monitor movements and structural changes in the heart of the city center, in an area subject to strong environmental and traffic constraints.**



Three DELTA L+ mini sensors were installed for a six-month monitoring period.

This monitoring aims to prevent any potential risk linked to structural deformations and to ensure the safety of residents and users in a highly frequented area of Madrid's city center.

