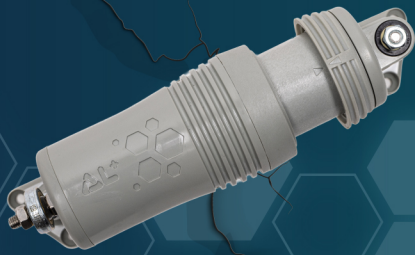




DELTA L +
Monitoring crack development





The DELTA L+ is a connected electronic sensor that allows cracks to be monitored with high precision and autonomy.

It allows you to monitor the movement of the crack nearby or remotely, as well as the outside temperature, all from your smartphone.



Compact & Durable
Polycarbonate / IP66



Precise
0,01 mm / 1°C
Course 25 mm



Plug & Play
Easy to use and install



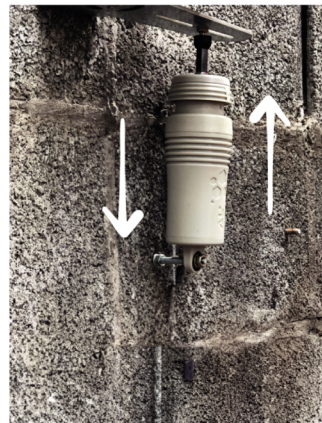
Autonom
Battery 3,6 V - 2,6 Ah



Connected
LPWAN or
Bluetooth network



Opening



Shear



Angle measurement



Discontinuity

Features

Battery 3,6 V - 2,6 Ah - Autonomy 1 to 4 years*	Weight 250 g	Dimensions 13 cm x 5,5 cm
Resolution 0.01 mm - 1°C	Connection Bluetooth & Radio LPWAN	Protection IP66
Accuracy 5 µm - 0,5°C (+/-)	Measure spacing from 10 min to 24 h	2 attachment modes
Internal memory de 250 000 mesures	Operating temperature -25°C° to +70C°	Measurement range 0 to 25 mm (+/- 1 mm)

*depending on frequency, sensor exposure and data transfer mode (Bluetooth, LPWAN, etc.).

The DELTA L+ sensor enables remote monitoring of cracks with high precision (to within one hundredth of a millimetre). The patented design and system of the DELTA L+ sensor make it easy to install in two points. Thanks to the joints at each end, the tool allows for a wide range of movement.

The polycarbonate shell provides good resistance to impact and weather conditions, while the fibre-reinforced polycarbonate measuring body ensures the system is watertight, durable and accurate.

The sensor's design reduces the impact of expansion on measurements, makes the device discreet and protects it from external physical attacks (excluding vandalism).

The DELTA L+ sensor has been designed to make a professional tool accessible to everyone by **facilitating installation, configuration and monitoring of cracks** using the Feelbat app or the Feel Monitoring web portal.

Finally, once activated, the LINKFEEL service automatically transmits data to the secure FEELBAT cloud via the LPWAN radio network, combining low power consumption, long range and reliable communication.

SIMPLE AND EASY TO INSTALL

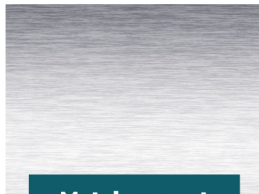
01 Suitable for all types of materials



Hollow support



Brick support



Metal support

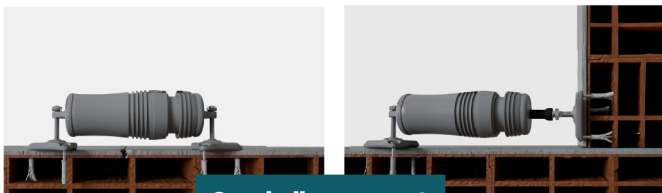


Wooden support



Stone support

02 Types of fasteners



On a hollow support

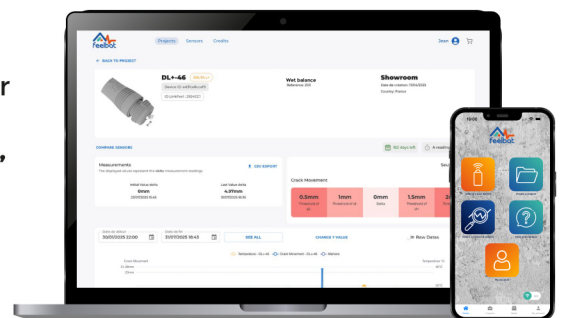


On a solid surface

03 View your data in real time and remotely

Install your sensors, configure them, and monitor your structures in real time wherever you are. **Receive alerts if a predefined threshold is exceeded, for effective prevention and optimal security.**

Edit PDF reports in just a few clicks!



Our other products



DELTA L Expert Pack

The DELTA L Expert is a comprehensive crack meter that allows you to **monitor cracks on three axes** with high precision. The gauges can be fixed with a hammer-in plug or two-component adhesive. Simply take your measurements and enter them into the app for regular monitoring.

Opening - Shearing - Misalignment



DELTA R

The DELTA R is a connected dual-axis tilt sensor that allows you to **monitor the tilt movement of walls or structures** with high precision and autonomy.

It allows you to monitor tilt movements on both axes as well as the external temperature from your smartphone.

Two measurement axes: Y - X



Pack DELTA L+ extenso

The Extenso pack allows you to measure and monitor movements and displacements in structures such as tunnels, bridges, or buildings.

It enables you to assess the stability and integrity of the structure by detecting changes in convergence, thereby helping you to take preventive measures.

10 ML fil INVAR or 20 ML fil INVAR



DELTA L+ mini

The DELTA L+ MINI provides autonomous and accurate crack monitoring, while assessing the impact of solar exposure on the cracked substrate.

It can be installed in seconds using adhesive, without drilling.

The smallest connected crack sensor in the world!



DELTA X-Hs

The DELTA X-Hs is a connected sensor equipped with an electronic probe for **measuring soil moisture with high accuracy and autonomy**.

The probe, which is buried at the foot of structures, provides relevant data for effective diagnostics in the field of clay shrinkage and swelling.

The most functional choice for the RGA



DELTA X-P

The X-P sensor, a piezometric sensor, allows automatic monitoring of the groundwater level.

The piezometric probe is equipped with a reinforced cable with waterproof connectors and an atmospheric correction system.


X ml reinforced cable (several cable lengths available)



**If you crack...
you FEELBAT**


Contact us

 contact@feelbat.fr

 +33 4 123 800 90

 www.feelbat.fr


contact@feelbat.fr
04 123 800 90


4 rue Louis Breguet
JACOU 34830 FRANCE
Headquarter 20 rue Maxime Riviere
97490 SAINT-DENIS


www.feelbat.fr
in f o