

# Use case

## MONITORING OF A PHARMACY IN ROCHEFORT

### Following the installation of heavy machinery on the floor

Concerns were raised regarding the stability of the floor of a pharmacy in Rochefort. Due to connectivity limitations on site, a data transmission system using a micro-station was implemented.

**The objective of this monitoring is to track potential ground movements beneath the floor, ensure the safety of the building open to the public, and anticipate any necessary interventions in the event of risk.**



An extensometer was installed between the ground and the floor to measure convergence variations and detect any potential settlement related to the machinery.

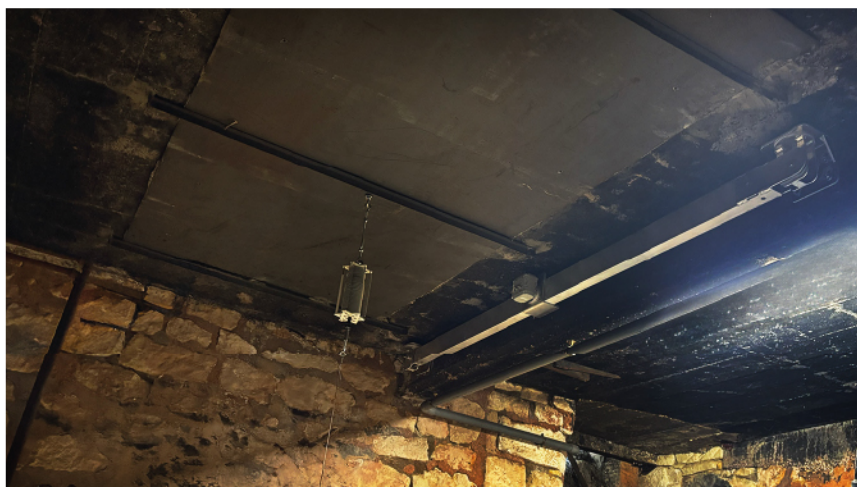
As a complement, an inclinometer line was installed to precisely monitor deformations of the load-bearing elements, particularly the central beam.

Thanks to the micro-station, data can be collected remotely, with alert thresholds configured to anticipate any potential risk.



Monitoring will be ensured for one month by Bati-Conseil, particularly during the installation of the machinery on the floor and throughout the repair works.

Automatic alerts have been set up to notify the client if movements become critical.



Learn more  
<https://feelbat.fr>