



NETWORK REPEATER MANUAL

Remote monitoring via Bluetooth



TABLE OF CONTENTS

Introduction

01

P02_ Introduction

Technical specifications

02

P03_ Specifications and indicator lights

Packing list

03

P04_ Package contents

Device start-up

04

P05_ Connection

Repeater setup

05

P06_07_08_ Web or mobile application

Battery life

06

P09_ Table

Closing the device

07

P09_ Closing the cover

Battery replacement

08

P10_ Battery replacement

P11_ Closing the enclosure

Useful information

09

P12_ Warranty

P12_ FAQ



01 Introduction

In an area covered by the Sigfox network, there may still be shadow zones (such as a cellar, basement, etc.).

It is recommended to use a repeater, which creates a link between the sensors and the Feelbat cloud for data retrieval.

⚠ Warning: the sensors must be located at a distance of 15 to 20 meters in open field from the repeater, and the repeater must be placed in an area covered by the Sigfox network to ensure reliable data transmission.

Once the repeater is configured and installed, you will be able to receive and view data in real time on your smartphone or computer, and generate alerts if necessary (see diagram below).

If you encounter any issues, please contact us at: (may appear in your spam folder)
SAV@feelbat.fr



Note: the repeater can send a maximum of 140 messages per day*
See section 6 for information related to battery consumption.

02 Technical specifications

Battery x2 3,6 V - 8,2 Ah	Communication Bluetooth & LPWAN network	Mounting system DIN rail, wall, clamp*
Dimensions 185 x 50 x 27 mm	Range between 15 and 20 m	CE certification
Operating conditions -25 °C +70 °C	Weight 135 g	Enclosure IP67

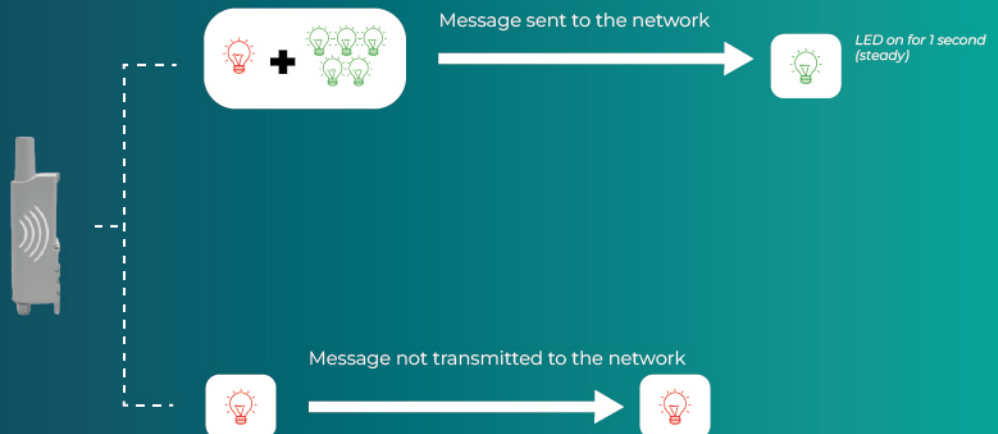
*not included

LED indicators

MODE	RED LED	GREEN LED
Factory mode	OFF	OFF
Magnet detection	ON as soon as the magnet is detected	ON for 1 s when activated via magnet
Switching to installation mode	Flashing (2 times per second)	Flashing every 500 ms
Configuration	ON	ON
Operation: frame detection	ON until detection ends	OFF
Operation: frame repetition	OFF	Flashing per repetition
Operation: heartbeat frame transmission	OFF	Flashing per repetition
Operation: duty cycle issue <small>(no message repetition)</small>	Flashing (100 ms ON / 100 ms OFF) ×3	OFF

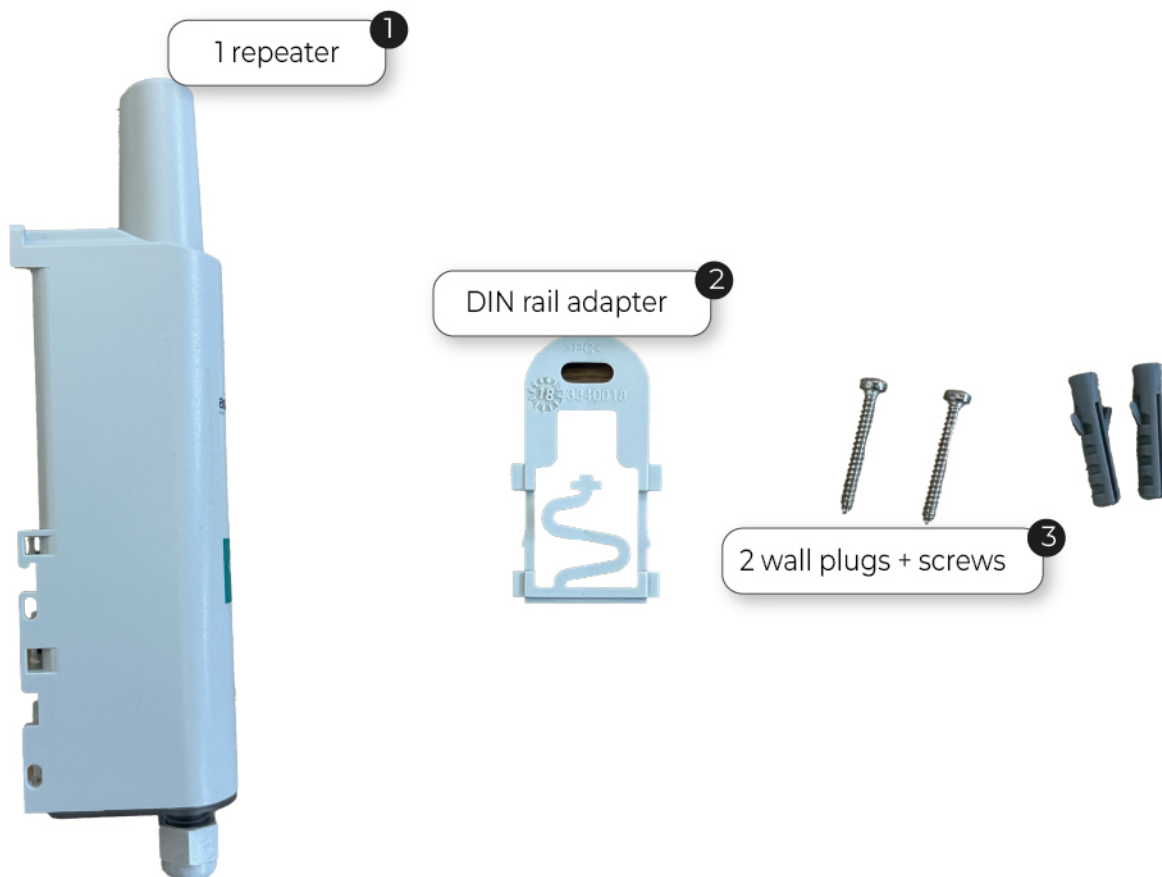


Sigfox repeater ID



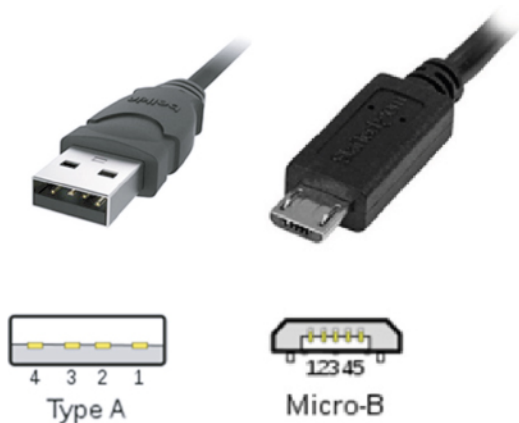
The LED indicators are located under the repeater and are only activated when the device repeats or sends a message.

03 Packing list



💡 Mounting advice

- A drill with a 4 mm drill bit
- A PZ1 screwdriver
- A USB to USB-B cable for data transfer (see photo)
- A smartphone, tablet or PC to download the application (excluding Apple)
- A magnet



⚠ Important information : before any configuration, you must send the repeater ID number by email to:

sav@feelbat.fr

This will allow a LINKFEEL token to be assigned so that you can proceed with the configuration.

Please notify us at least 72 hours before commissioning.

04 Repeater start-up



We strongly recommend connecting and configuring your repeater before going to the job site.

Please notify us between 72 and 96 hours before commissioning, so that our support team can intervene if necessary.

Step 1

Before installing your repeater, you must connect the cable.



01

To begin, remove the cover located at the rear of the repeater.



02

Remove the board in order to connect the USB to USB-B cable.



03

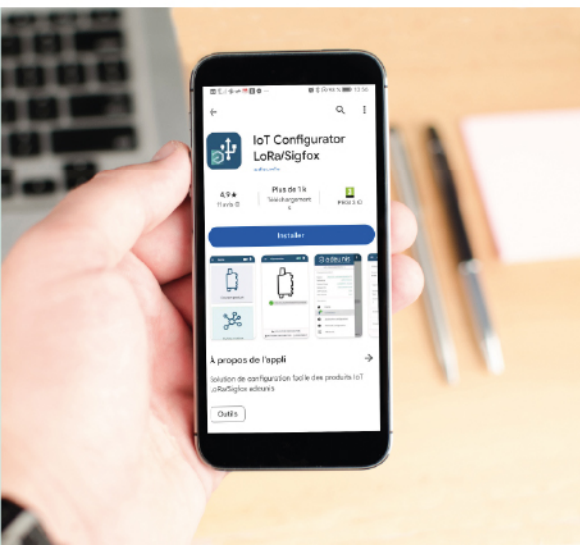
Use a USB-B data cable (not a charging-only cable) to ensure proper data transmission.



04

You can now download the application as a ZIP file.

See the link below.



Download the ADEUNIS application on a smartphone or Windows computer



The application is not available on iOS (Mac and iPhone).

Go to the link below, download the ZIP folder and follow the Windows installation instructions to install the application:

<https://drive.google.com/drive/u/0/folders/17ALb4GiMOwLCUdMH315iTbul359Qp8Sk>

05 Configure the repeater

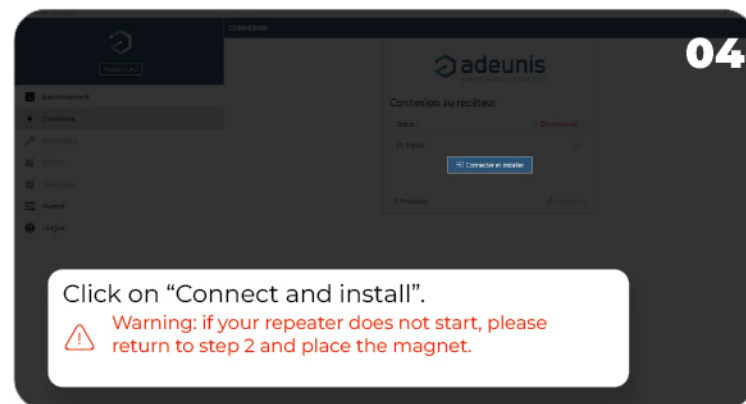
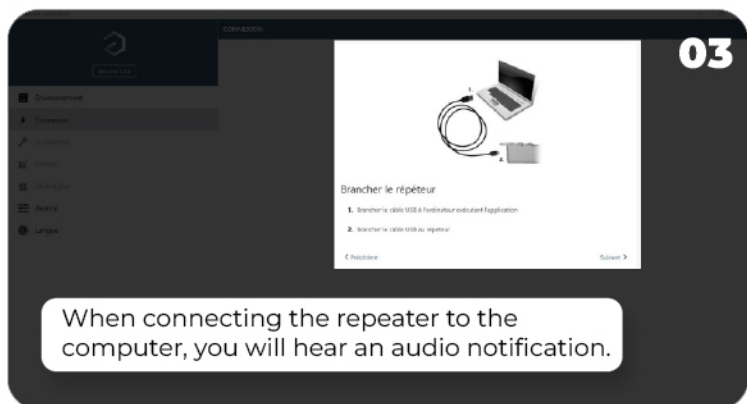
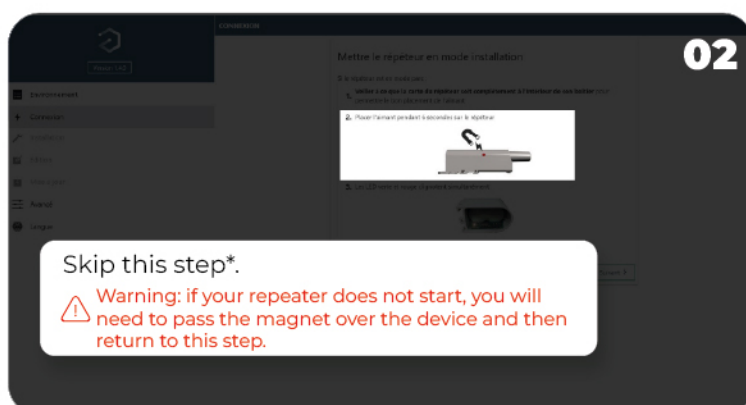
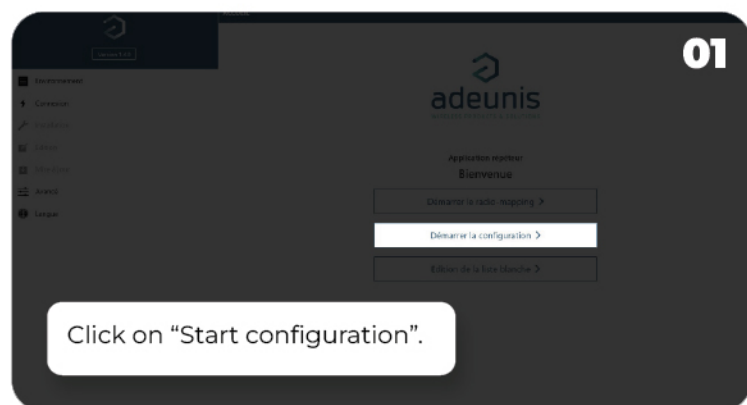
The repeater is supplied with a LINKFEEL token for a one-year connection. You can extend this connection by contacting your regional sales representative.

The subscription via a LINKFEEL token activates the repeater for a period of one year, allowing it to transmit data to the cloud.

Once activated with a LINKFEEL token, the repeater can transmit data only if it is installed in an area covered by the SIGFOX LPWAN network.

To check network coverage, scan the QR code (the map is indicative only).

To ensure good signal quality, we strongly recommend using the network tester button available in our product range.



If the magnet is used too frequently, the red LED will turn on and the repeater will enter safety mode. You will then need to wait 24 hours for it to unlock.

05

You will find your repeater ID number.

Click on "Start configuration".
The repeater LED should turn on.

06

Validate this step.
You have nothing to do on this step.

07

Editing the whitelist allows you to define which sensors will be repeated and prevents the repeater from relaying messages from unwanted devices.

A repeater can manage up to 15 sensors around it and repeat a maximum of 6 messages per hour.

08

Enter your sensor ID* here, then click on "Validate step".

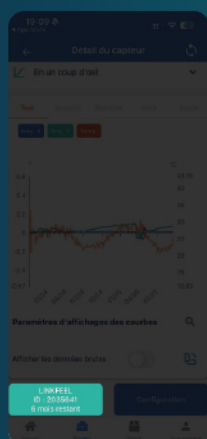
09

Validate this step.
You have nothing to do on this step.

10

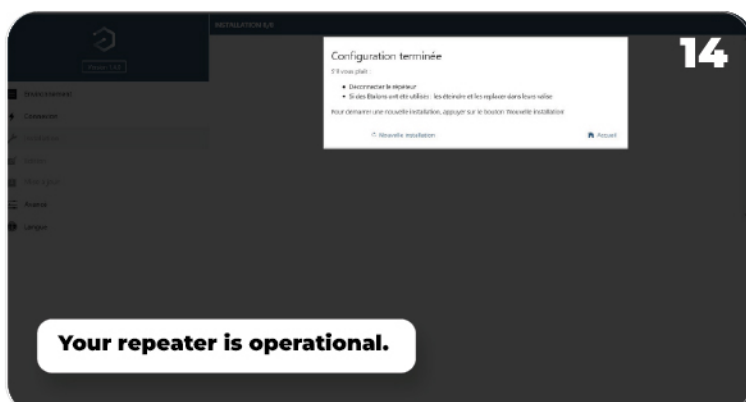
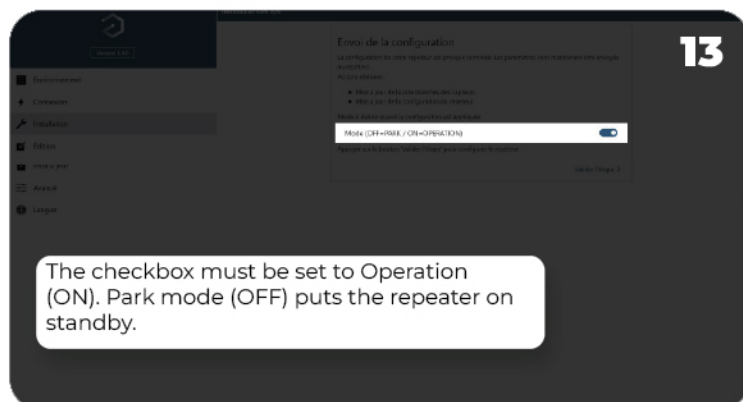
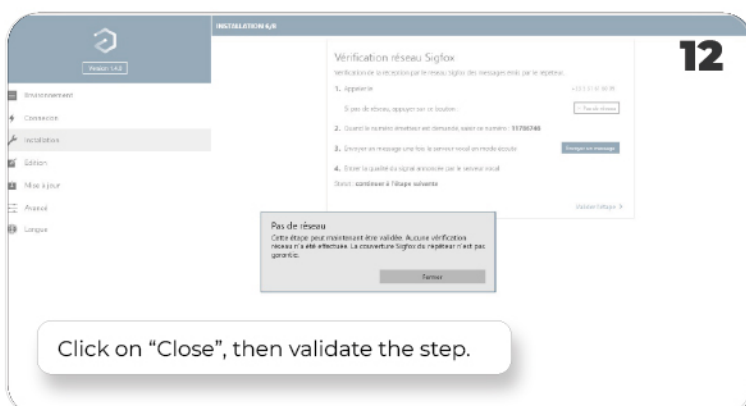
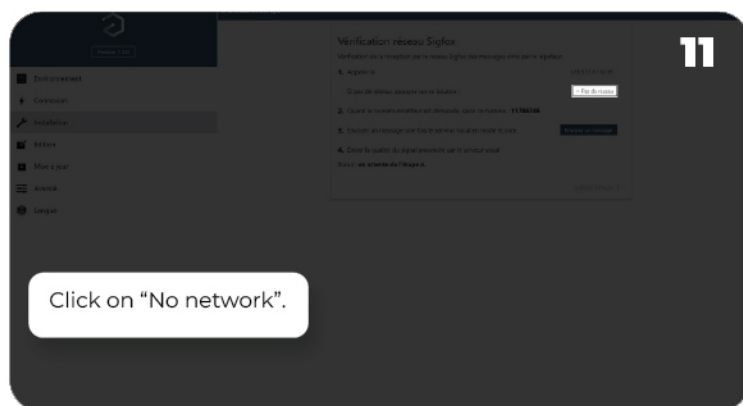
Validate this step.
You have nothing to do on this step.

* Your sensor ID is available on the web and mobile application, as shown in the image below.



Web application interface showing a list of sensors. The top section is 'Capteurs en stock' and the bottom section is 'Capteurs avec jetons Linkfool'. Each sensor entry includes a name, ID, and a 'Valider l'étape' button.

Zone	Sensor Name	ID	Expire
Zone 1	Delta Lx_01	4770460000	20250304
Zone 2	Delta Lx_02	4770460000	20250304
Zone 1	Delta Lx_03	4770460000	20250304



Repeater ready for use

You can now use your repeater: your sensors transmit their data to the FEELBAT cloud.

Each repeater is associated with a LINKFEEL token valid for one year. At the end of this period, the token must be renewed to ensure continuous data transmission.

- ✓ Remember to record the expiration date.
- ✓ Carefully keep the white label, as it will be required for renewal.



06 Battery life

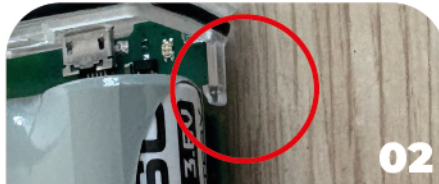
Depending on the number of sensors repeated by the device, it is recommended to plan a battery replacement according to the table below:

Use case	Nmb. of devices	Total nmb. of repeated messages per day	Battery life (estimated for one repeater)
Best use: the device transmits one message per day	1	1	7 years
5 devices, each transmitting 2 messages per day	5	10	6 years
15 devices, each transmitting 5 messages per day	15	75	3,5 years
Unfavorable use: 140 messages per day	RAS	140	2 years

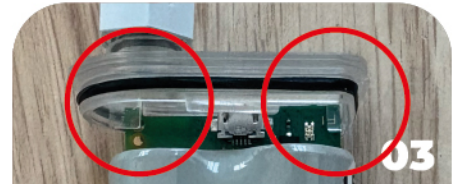
07 Closing the repeater cover



01
Disconnect the repeater from your computer.



02
Insert the keying tab into the notch provided for this purpose on the electronic board.



03
Then reposition the cover so that the electronic board aligns with the two small notches.



04
Finally, clip the cover back into place.

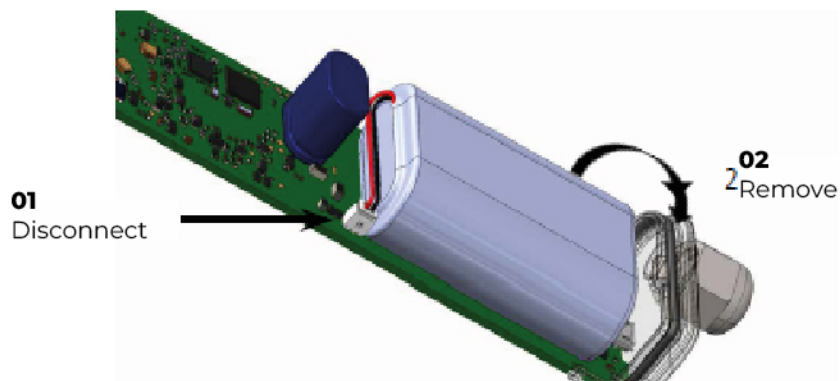
Apply grease to ensure the repeater's watertightness. Be careful not to move or pinch the seal.

08 Battery replacement

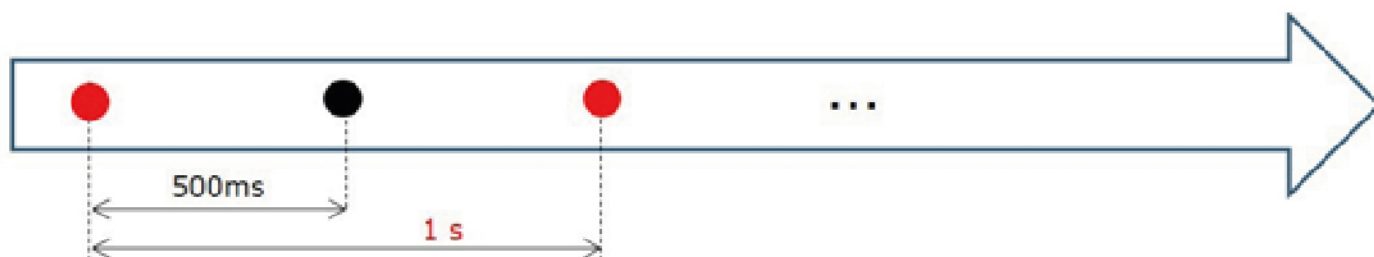
Battery replacement

Start by opening the enclosure using the cable gland as a lever.

Then, **disconnect the old battery** from the electronic board as shown in the image.



Connect and insert the new battery, then close the enclosure.



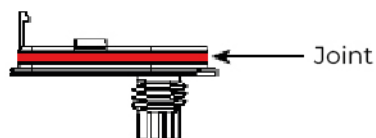
The LED flashes **red** once per second for 20 seconds.

Then follow the activation procedure described in the “Repeater activation” section to check the LED behavior.

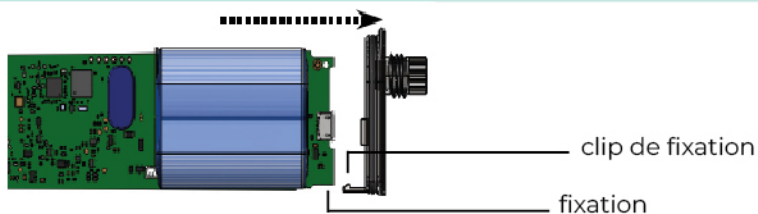
If the battery has sufficient power, the repeater switches to PARK mode; otherwise, it remains in DEAD mode.

Enclosure closure

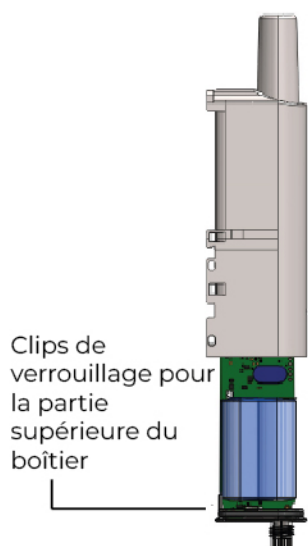
After completing the previous steps, you can close the Sigfox repeater enclosure.



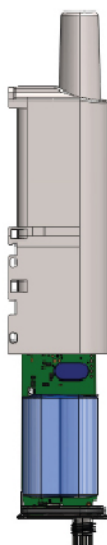
- 01.** Make sure the seal is correctly positioned on the base.



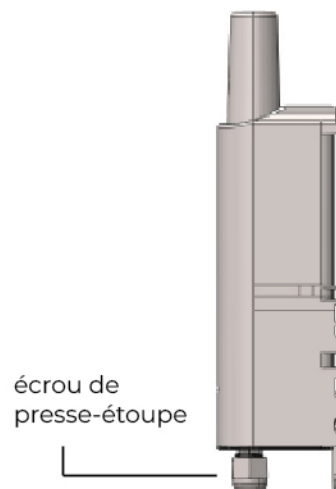
- 02.** Clip the electronic board onto the enclosure. Ensure that the locking clip is properly secured in its slot on the board.



- 03.** Insert the upper part of the enclosure into the guide rails and make sure the board is correctly positioned.



- 04.** Once the board is in place, fold down the upper part of the enclosure and lock it firmly to ensure IP67 sealing.



- 05.** Finish the assembly by tightening the cable gland nut.

Product start-up

Once the product is configured and assembled, it is ready to be started.

Start-up is performed using a magnet, placed on the upper part of the repeater.

After validation, the Sigfox repeater immediately transmits status frames, followed by a data frame (according to the configured transmission interval).

09 Informations utiles

FEELBAT products are covered by the legal warranty of conformity.

This warranty covers defects of conformity with respect to the sales contract that appear within two years following delivery of the product.

They are also covered by the warranty against hidden defects, which applies to defects not apparent at the time of sale and which render the product unfit for use or significantly reduce its use.

As such, the warranty does NOT apply in the following cases:



The sensor has fallen



The housing is damaged
(impacts, cracks, marks)



The sensor is used for
non-compliant purposes



The sensor has been
immersed in water



The sensor is stored or used
outside the temperature
range (-25 °C to +70 °C)



The fixings restrict the
linear operation of the
sensor



The sensor is used beyond
its measurement range



The sensor was purchased
more than 2 years ago



Have a question?

Visit our FAQ: it gathers answers to the most frequently asked questions and guides you step by step in using our solutions.

[Access the FAQ](#)



If you have a crack You **FEELBAT**

Discover our tutorial videos

Watch the help videos



info@feelbat.fr
04 123 800 90



4 rue Louis Breguet
JACOU 34830 FRANCE
Head office 20 rue Maxime Riviere
97490 SAINT-DENIS



www.feelbat.fr
in f o