



FEELMONITORING NOTICE

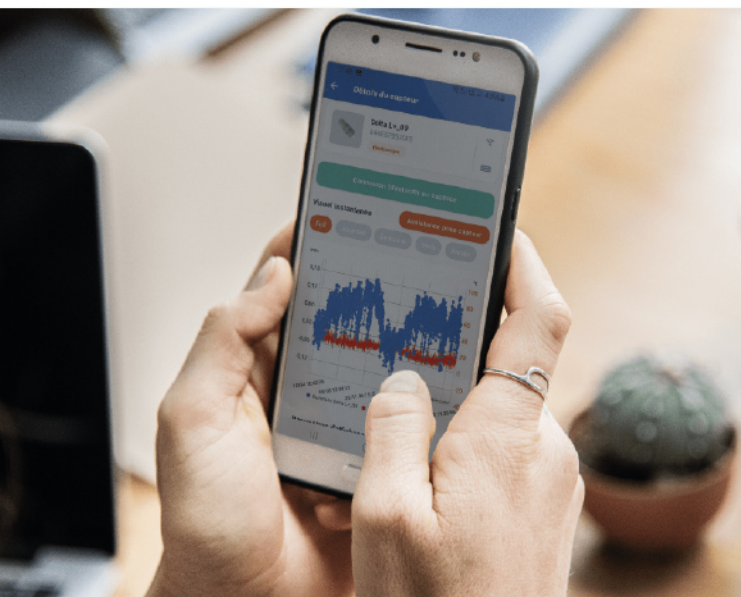
Remote monitoring or via Bluetooth

TABLE OF CONTENTS

Log in	01
P01_ Log in	
Dashoard	02
P02_ Dashboard	
Sensor & project	03
P03_ Sensor tab	
P03_ Access a project	
Sensor information	04
P04_ Sensor information	
Compare sensors	05
P05_ Comparison	
My profile	06
P06_ Overview	
PDF report	07
P07_ Generate a PDF report	



01 Log in



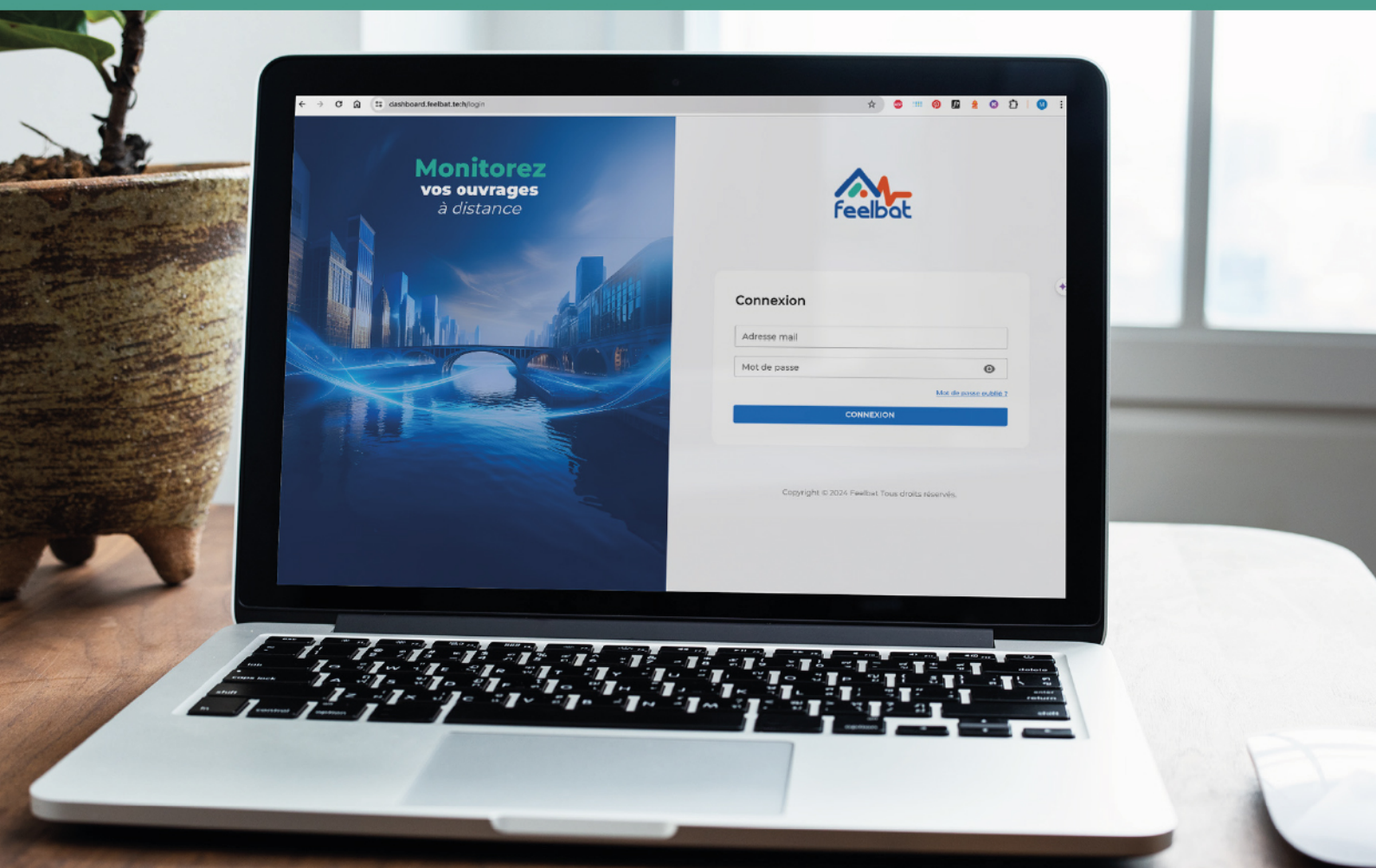
How to access FEELBAT Web Monitoring?

Before logging in to FEEL Monitoring, you must first create your account via the FEELBAT mobile application.

Then, enter your login details (email + password) on the Web platform.

Access the Web application

If you encounter any issues, please contact us at: (may appear in your spam folder)
SAV@feelbat.fr



02 Dashboard

01 To log out or access your profile, click on the icon.

The dashboard displays a grid of project cards. Each card includes a project name, creation date, number of zones, and active sensors. A dropdown menu for sorting projects by date is visible. Callouts 01-04 highlight key features: 01 points to the user profile icon, 02 points to the sort dropdown, 03 points to the project cards, and 04 points to the 'VIEW ALERT HISTORY' button at the bottom.

03 Once logged in, you have access to your Dashboard, which brings together all your projects.

The 'History' modal window displays filters for start_date (18/07/2025) and ending_date (19/01/2026), a project dropdown (Installation DELTA L), and buttons for SENSOR and MODULE. The main area is empty with the message 'No data to display at the moment.' Callout 04 points to the modal.

04 A history of received alerts is available from the Dashboard. Click on it and filter by date.

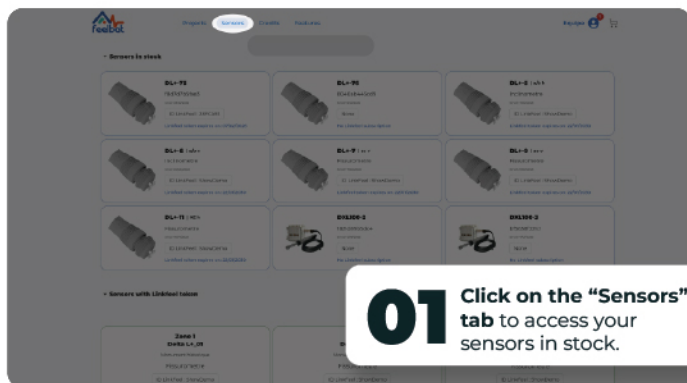
03 Sensor tab

02

In this tab, you will find **two categories**:

Stock: where all sensors linked to your account but not assigned to a project are stored.

Sensors with Linkfeel tokens: includes all sensors assigned to your projects, indicating those with a valid Linkfeel subscription, to be renewed or expired.



01 Click on the “Sensors” tab to access your sensors in stock.

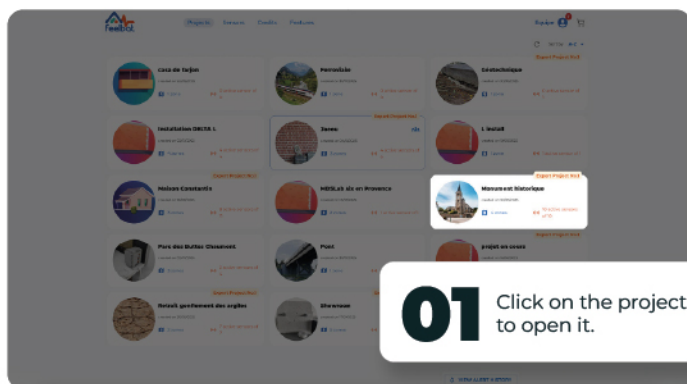
03

If your sensor has already had a Linkfeel subscription, **you can extend or renew it remotely from this space**, provided you have available Linkfeel tokens in your Feelbat account.

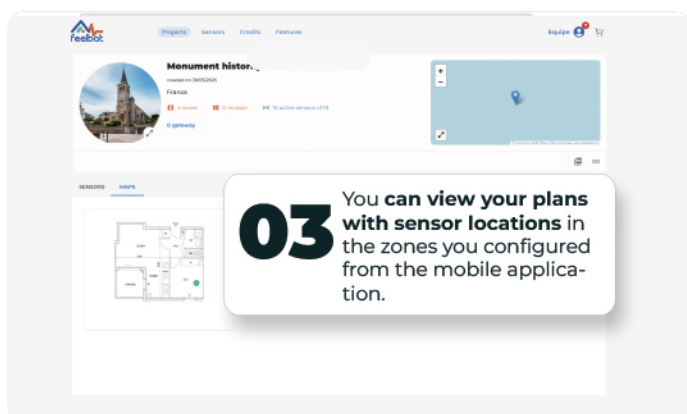
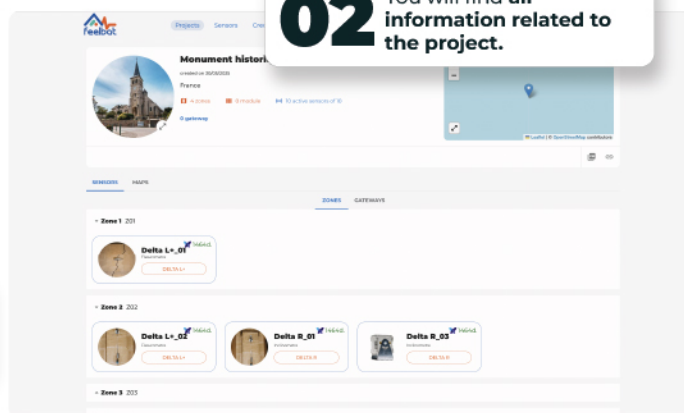
03 Accessing a project

02

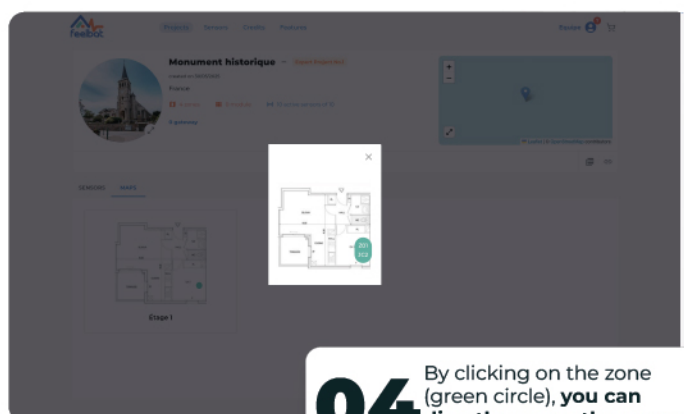
You will find all **information related to the project**.



01 Click on the project to open it.



03 You can view your plans with sensor locations in the zones you configured from the mobile application.



04 By clicking on the zone (green circle), **you can directly access the sensor information**.

04 Sensor information

The screenshot displays the 'Delta L+_01' sensor page in the Feelbat application. The interface includes a top navigation bar with 'Projects', 'Sensors', 'Credits', and 'Features'. A sidebar on the left shows 'BACK TO PROJECT'. The main content area is divided into sections: 'Zone 1' (Reference: 201), 'Monument historique' (Date de création: 30/05/2025), 'COMPARE SENSORS', 'Measurements', and a graph area. The 'Measurements' section shows 'Initial Value delta' (1.35mm) and 'Last Value delta' (2.65mm). The graph area shows 'Crack Movement mm' and 'Temperature - Delta L+_01' with a date range slider from 23/07/2025 to 19/01/2026. The 'Adjustment Formula AX+B' section is at the bottom.

01 Information about the associated project.

02 You can compare sensors with each other.

03 Measurement intervals configured in your mobile application.

04 Alert thresholds configured in the mobile application (details available in the sensor configuration tab).

05 Data recorded by the sensor. You can zoom in or out to obtain more detailed information.

06 You can extend the date range slider to view data over a specific period.

07 Curve offset adjustment allows you to change the zero reference without causing curve discontinuity.

08 The AX+B feature allows you to analyze curves by refining the analysis of variations related to temperature effects.**



TIP

You can change the Y-axis value on the graphs, meaning the minimum or maximum movement values.

You can view the curve using raw values or delta values by clicking the button.

The AX+B filter is available with an Expert Project – Level 1.

05 Compare sensors

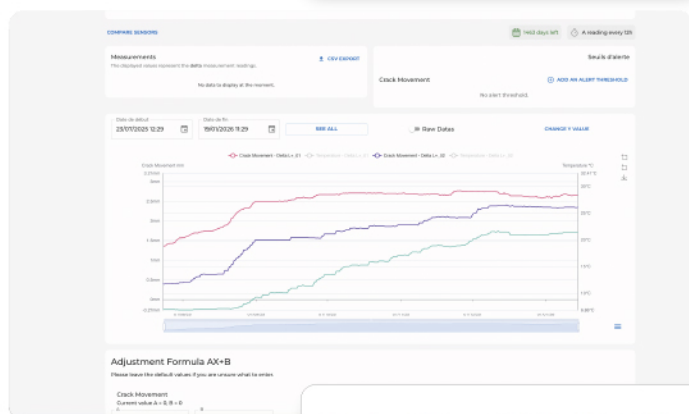
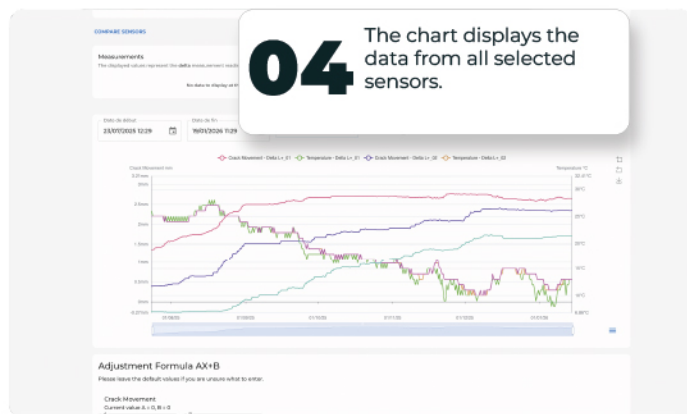
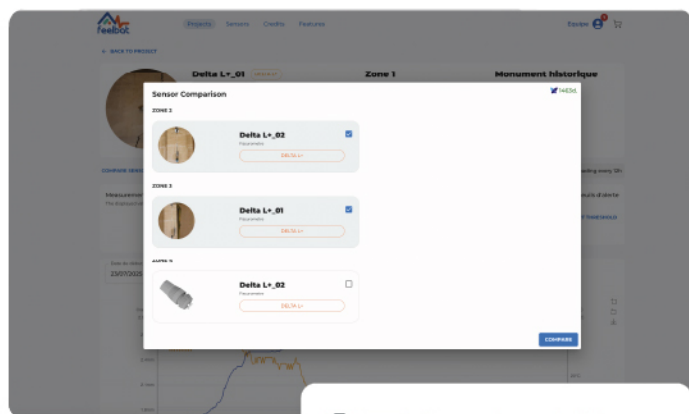
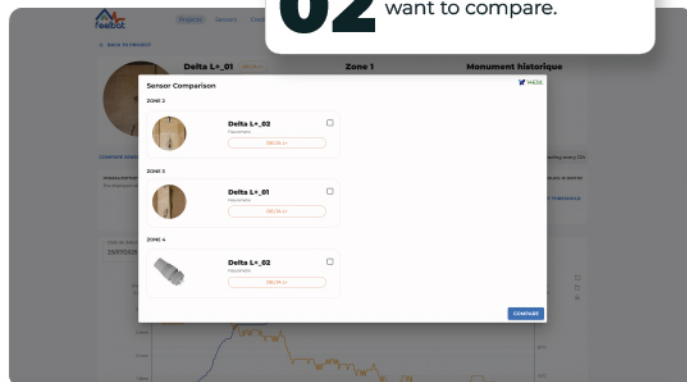
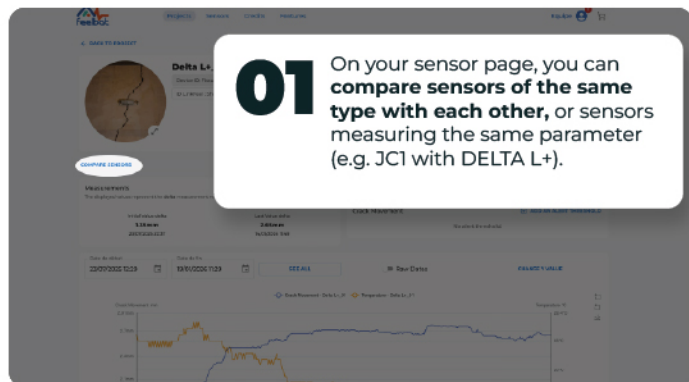
01 On your sensor page, you can **compare sensors of the same type with each other**, or sensors measuring the same parameter (e.g. JC1 with DELTA L+).

02 Select the sensors you want to compare.

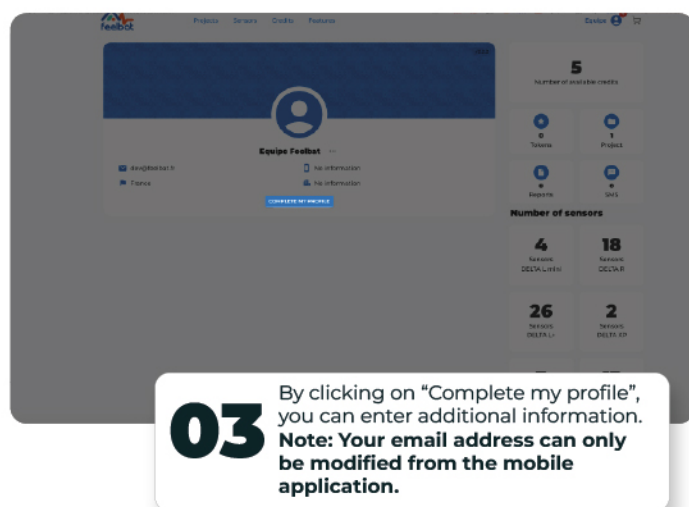
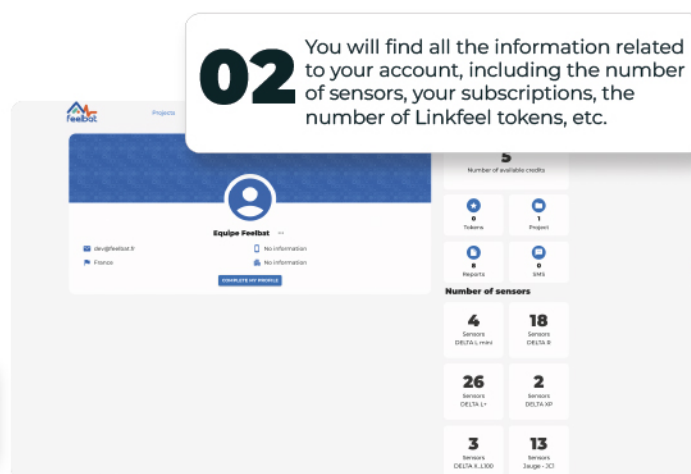
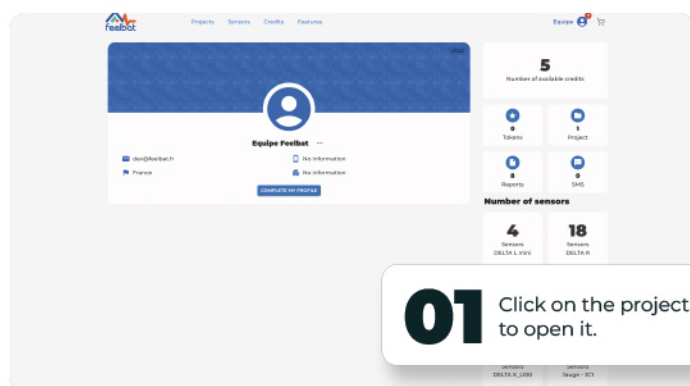
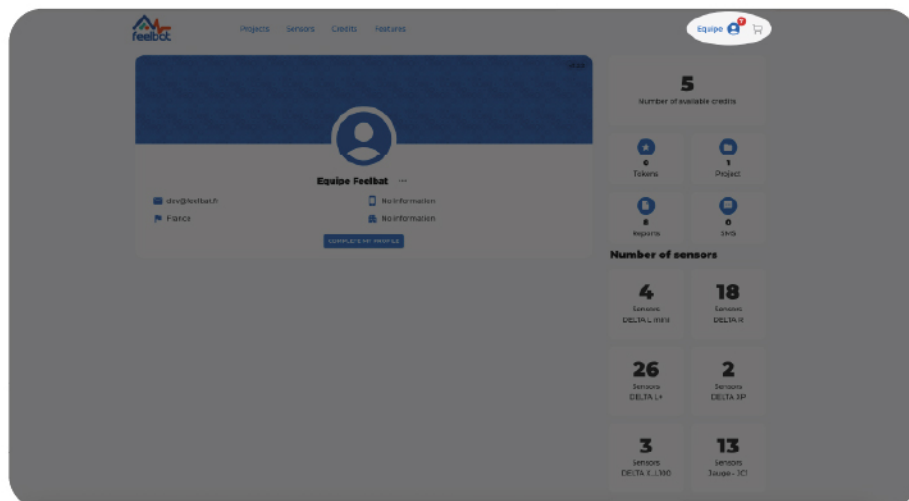
04 The chart displays the data from all selected sensors.

03 Once selected, click on "Compare".

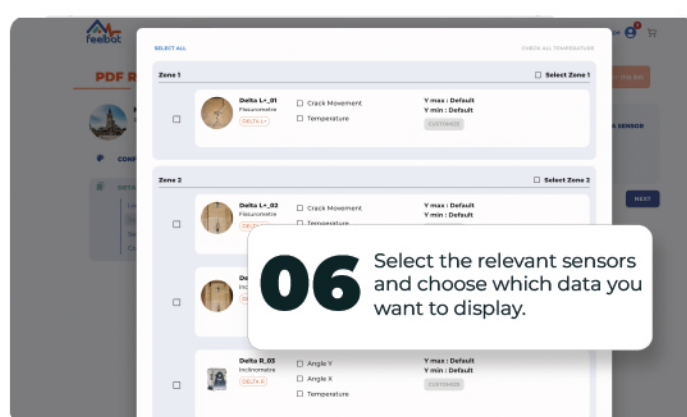
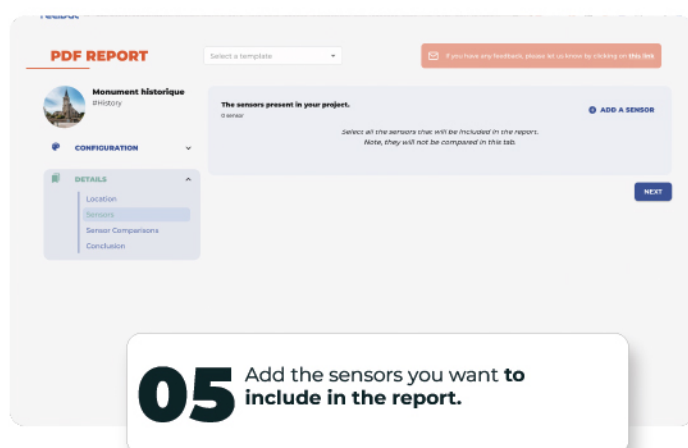
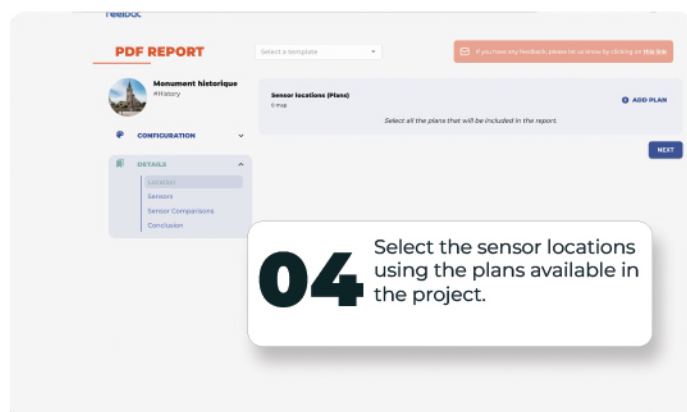
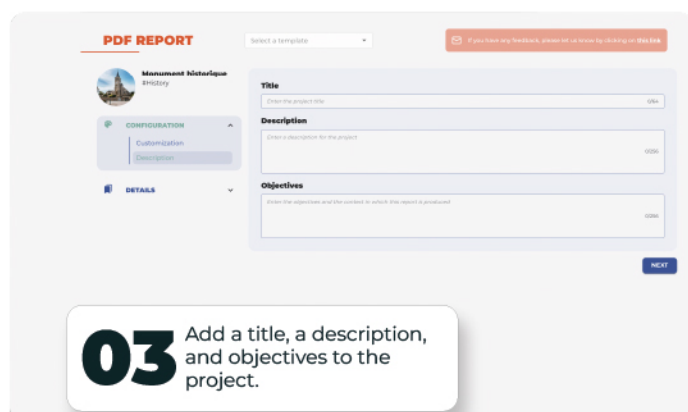
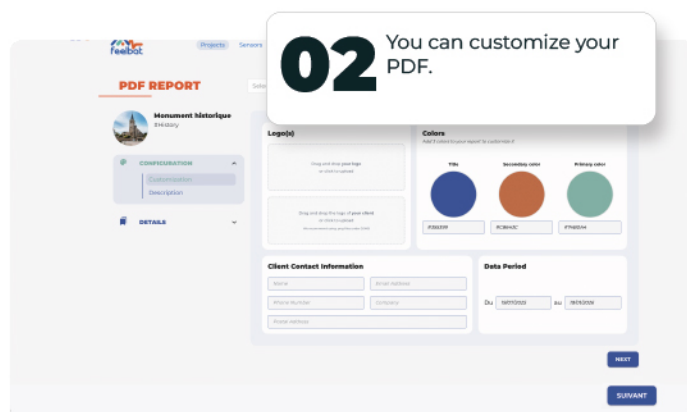
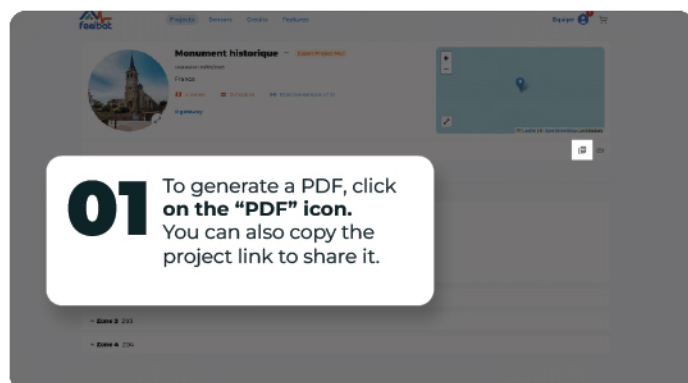
05 You can deselect the data you do not want to display on the chart by clicking on it.



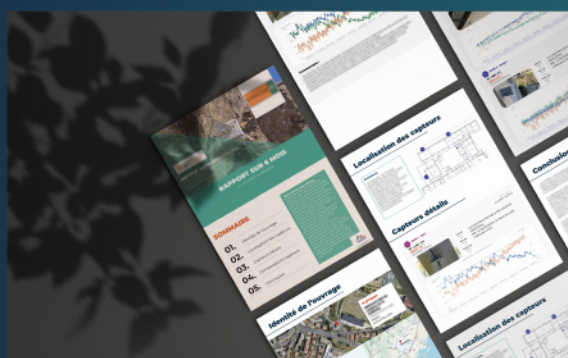
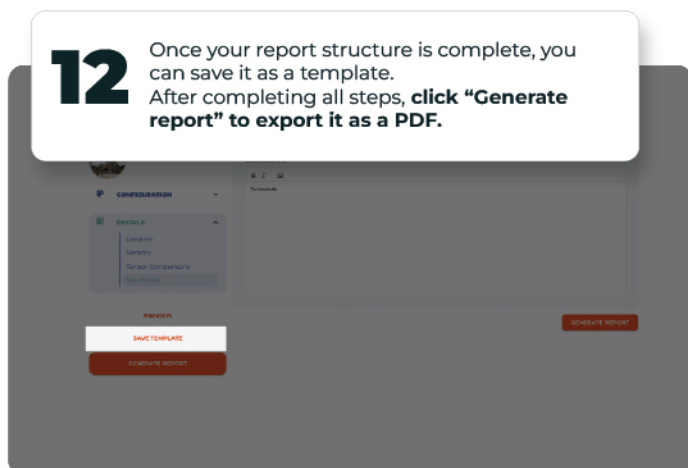
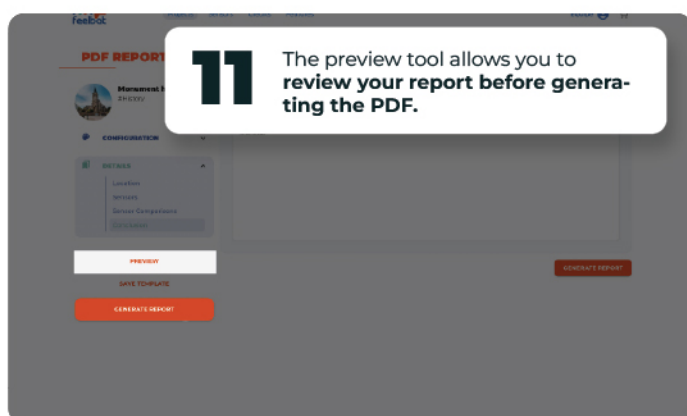
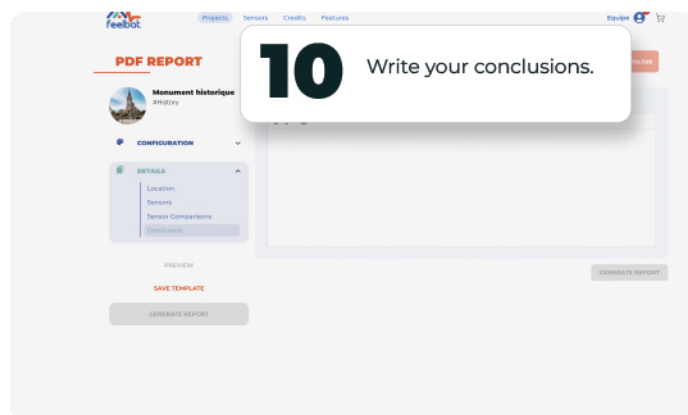
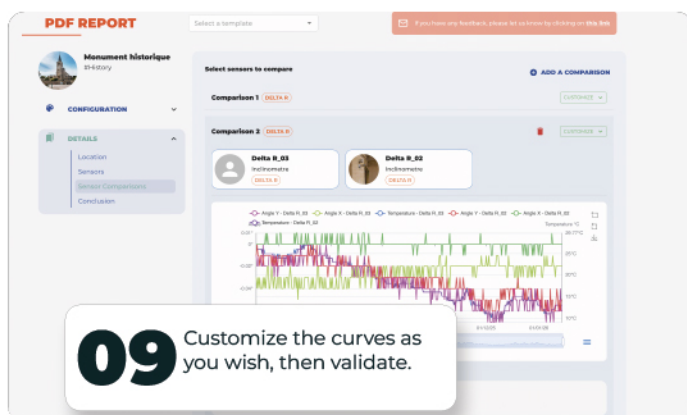
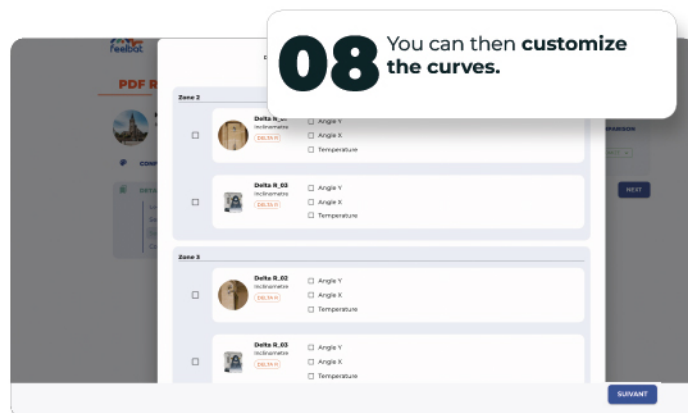
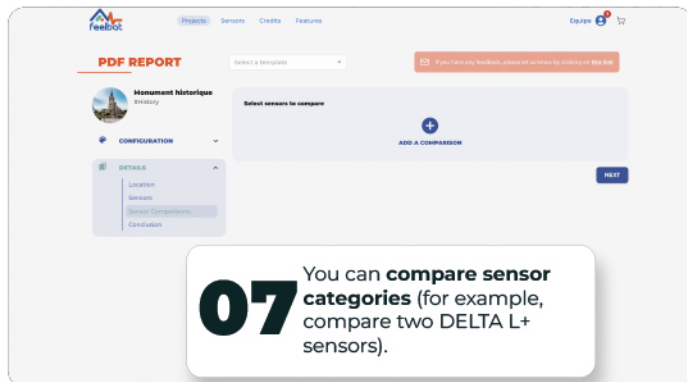
06 My profile



07 PDF report



07 PDF report



PDF REPORT

Generate automated and fully customizable reports.



If you have a crack **You FEELBAT**

Discover our tutorial videos

Watch the help videos



info@feelbat.fr
04 123 800 90



4 rue Louis Breguet
JACOU 34830 FRANCE
Head office 20 rue Maxime Riviere
97490 SAINT-DENIS



www.feelbat.fr
in f o